



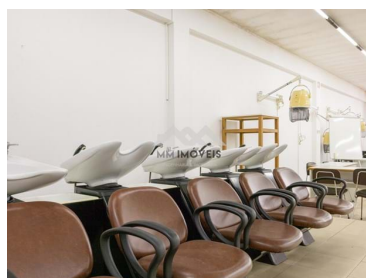
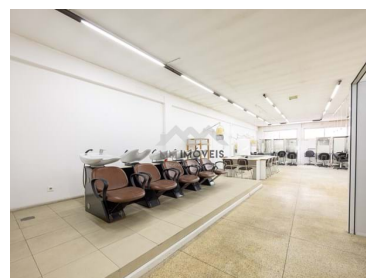
MM357/24BON/AMI

Reference

Scan the QR code to view the property



Bonfim - Commercial property



3

Bathrooms



199,52

Area (m²)



N/A

(EUR €)

Shop | Warehouse | Office | Rua do Amparo | Harbor

On Rua do Amparo, a space that can host commerce or services.

In the RC of a residential building, in the surroundings of Avenida Fernão Magalhães and Praça das Flores.

It is a consolidated residential area that has been requalified. Composed essentially of small local businesses linked to traditional commerce and services, the requalification of the area has been attracting new companies linked to construction, real estate, logistics and the technological and creative sector. The growing presence of urban regeneration projects and modern infrastructure is expected to continue to boost business activity in the area.

Rua do Amparo is close to several important infrastructures such as Campanhã Station, Estádio do

**Ana Meneses**+351 919 365 958 ²

ana.meneses@mmimoveis.pt

T +351 933 298 913 ² · E geral@mmimoveis.pt
Estr. da Circunvalação 3846 Sala 7, 4435-183 Rio Tinto
AMI 14355

¹ (Call to national fixed network) | ² (Call to national mobile network)



MM357/24BON/AMI

Reference

Scan the QR code to view the property



Dragão, and areas of cultural interest such as the "Novo Matadouro" and São Roque Park. This mix of transport, commerce, culture and nature makes the surrounding area dynamic and with growing potential.

The space has three bathrooms and a storage area.

Energy certification: C

For more information, our team is at your disposal!

Property Features

- Proximity: Shopping, Restaurants, City, Hospital, Pharmacy, Public Transport, Schools
- Built year: 1985
- Floors: 1
- Central location
- Energetic certification: C



Ana Meneses

+351 919 365 958 ²
ana.meneses@mmimoveis.pt

T +351 933 298 913 ² · E geral@mmimoveis.pt
Estr. da Circunvalação 3846 Sala 7, 4435-183 Rio Tinto
AMI 14355

¹ (Call to national fixed network) | ² (Call to national mobile network)