



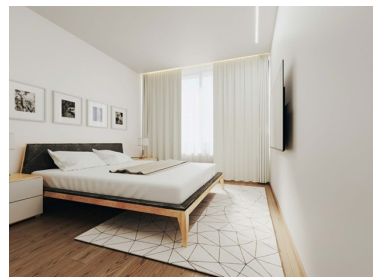
MM169E/24PAR/PSI

Reference

Scan the QR code to view the property



## Paranhos - Apartment



N/A  
CLASSE  
ENERGÉTICA

3  
Bedrooms

3  
Bathrooms

139  
Area (m<sup>2</sup>)

Garage

**480 000 €**  
(EUR €)

### Enterprise | New T3 | Construction | S. João | Facilities

PreguiLume I development consisting of 12 apartments on two fronts with generous balconies, type T2 and T3, spread over 5 floors and 1 garage floor, with gross areas of 114.36m<sup>2</sup> to 202.98m<sup>2</sup>.

It was designed for your convenience and comfort, having the ideal location for those who want to live in the city of Porto. Located on Rua Dr. Joaquim Pires de Lima, in Paranhos, which allows easy and quick access to the central areas of the city, notably the University Center, hospitals, schools, shopping and leisure areas.

The PreguiLume I Development stands out for its high quality and excellent finishes with unique details, highlighting spacious and bright spaces, with balconies and private parking.



**Paulo Silva**

+351 932 030 965 <sup>2</sup>  
p.silva@mmimoveis.pt

**T +351 933 298 913 <sup>2</sup> · E geral@mmimoveis.pt**  
**Estr. da Circunvalação 3846 Sala 7, 4435-183 Rio Tinto**  
**AMI 14355**

<sup>1</sup> (Call to national fixed network) | <sup>2</sup> (Call to national mobile network)



MM169E/24PAR/PSI

Reference

Scan the QR code to view the property



## Property Features

- Air conditioning
- Equipped kitchen
- Fitted wardrobes
- Floors: 5
- Double glazing
- Lift
- Views: City view
- Solar orientation: North, South, East, West
- Video entry system
- Heat pump
- Dishwashing machine
- Built year: 2026
- Balcony
- Electric shutters
- Garage
- Central location
- Energetic certification: Exempt
- Security door



**Paulo Silva**

+351 932 030 965 <sup>2</sup>

p.silva@mmimoveis.pt

**T +351 933 298 913 <sup>2</sup> · E geral@mmimoveis.pt**  
**Estr. da Circunvalação 3846 Sala 7, 4435-183 Rio Tinto**  
**AMI 14355**

<sup>1</sup> (Call to national fixed network) | <sup>2</sup> (Call to national mobile network)