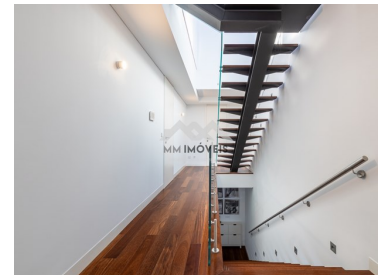




## Vila Nova da Telha - Villa



 **4**  
Bedrooms

 **5**  
Bathrooms

 **441**  
Area (m<sup>2</sup>)

 **Garage**

**600 000 €**  
(EUR €)

### House T4 | 3 fronts | Excellent areas | Terrace | Box 2 vehicles

House of typology 4, with three solar fronts (east / south / west), inserted in a plot with 441m<sup>2</sup>, located in a quiet and residential area, on Rua Joaquim Gomes Barbosa in Vila Nova da Telha.

Divided into 3 floors, the villa, of recent construction and with high quality finishes, is in an impeccable state of conservation.

With excellent areas, the property consists of a generous living room, with a private bathroom, ideal for a leisure room, office or gym. Direct light.

On the ground floor, main entrance, with entrance hall and access to a large and bright living room and kitchen that is fully equipped with top of the range appliances. Toilet service. Kitchen with access to the outdoor area and terrace.



**Miguel Mota**

+351 929 000 736 <sup>2</sup>  
miguel.mota@mmimoveis.pt

T +351 933 298 913 <sup>2</sup> · E geral@mmimoveis.pt  
Estr. da Circunvalação 3846 Sala 7, 4435-183 Rio Tinto  
AMI 14355

<sup>1</sup> (Call to national fixed network) | <sup>2</sup> (Call to national mobile network)



**Your Logo Here**  
*Friendly Real Estate*

MM416/23VNT/MMI

Reference

Scan the QR code to view the property



Outdoor space with independent laundry area and barbecue. Box for two cars.

On the first floor, private area with 2 bedroom suites. Both with built-in cabinets and with excellent areas. Lots of brightness in all of them. Balcony.

At the level of the second and last floor, there is the third bedroom with access to a terrace with unobstructed views and excellent sun exposure.

The property has air conditioning in all rooms, electric shutters with thermal cut-out and is equipped with an alarm.

For more information, our team is at your disposal!

## Property Features

- Air conditioning
- Dishwashing machine
- Proximity: Public Transport, Schools
- Balcony
- Double glazing
- Garage
- Views: Urbanization view
- Energetic certification: B-
- Basement
- Equipped kitchen
- Fitted wardrobes
- Garden
- Terrace
- Electric shutters
- Drive way
- Solar orientation: South, East, West
- Attic



**Miguel Mota**

+351 929 000 736 <sup>2</sup>  
miguel.mota@mmimoveis.pt

**T +351 933 298 913 <sup>2</sup> · E geral@mmimoveis.pt**  
**Estr. da Circunvalação 3846 Sala 7, 4435-183 Rio Tinto**  
**AMI 14355**

<sup>1</sup> (Call to national fixed network) | <sup>2</sup> (Call to national mobile network)